



EAST LEAKE  
— ACADEMY —



SIXTH FORM

Part of

**DA** Diverse  
Academies



**Mrs Pam Slack**  
Sixth form pastoral leader

# WELCOME

---

Sixth form is the final and most exciting stage of your journey here at East Leake Academy. We have a unique family atmosphere where our students flourish and achieve their full potential. Here you will be known, supported, and guided by passionate, dedicated teachers.

Our sixth form staff are all very experienced in helping prepare our students for life after A levels. We understand the challenges our students face as they move onto further education, employment or training and will support them every step of the way. This begins with our enrichment sessions in year 12 with weekly presentations from universities, apprenticeship providers and employers and continues through to the final stages of their applications in year 13.

In year 12 you will undertake a week of work experience and will be encouraged to further develop the super-curricular aspect of your studies by completing massive open online course (MOOC) alongside your A levels.

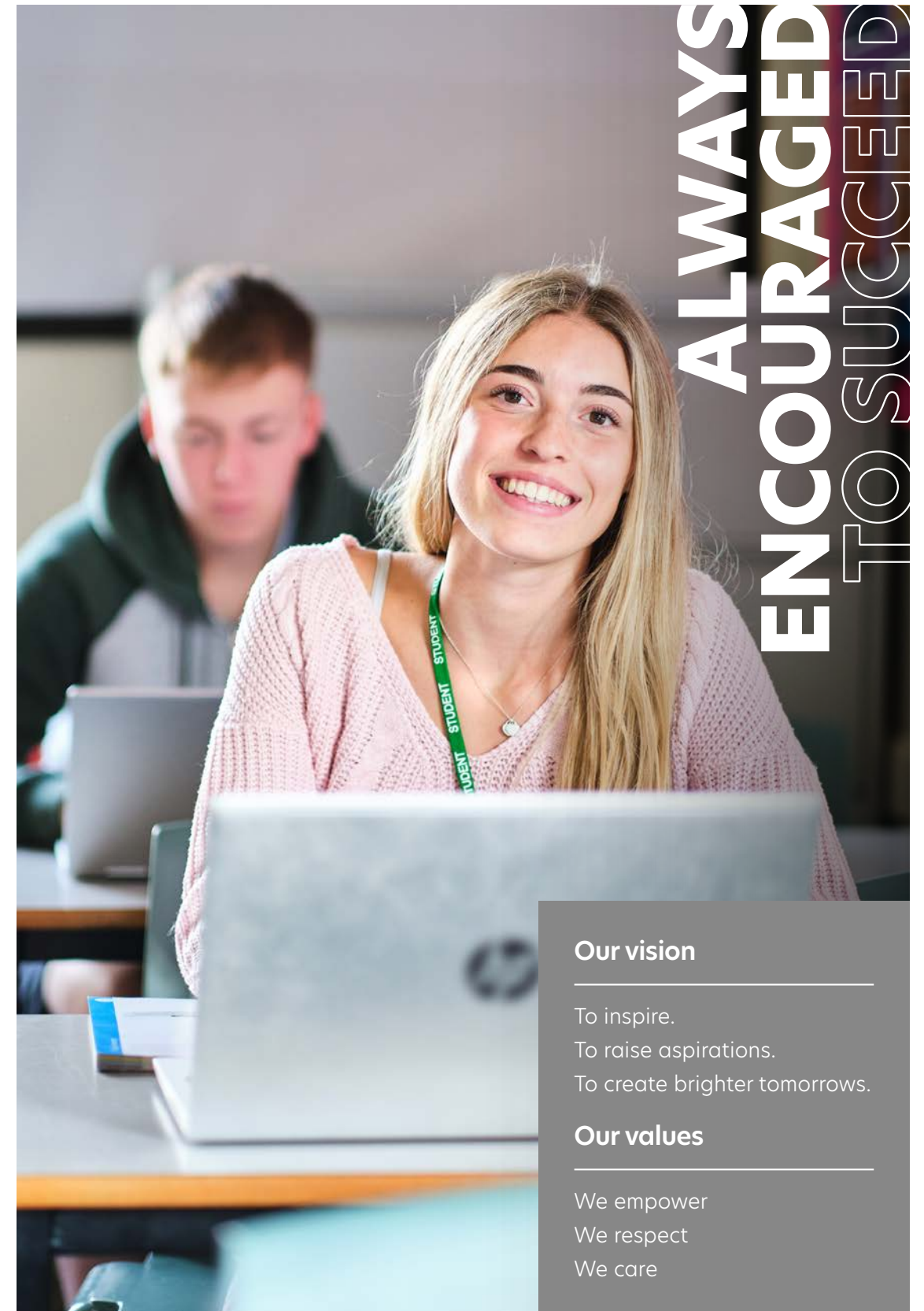
Throughout the next two years, you will be given many opportunities to develop your skills in leadership, organisation and teamwork through a wide variety of student-led activities such as sixth form committee, peer mentoring, running clubs, helping with reading intervention or community action projects. These will also contribute to our Community Contribution Award which is designed to develop your employability skills as well as fostering independence and self-motivation. This award also recognises the contribution that many of you make in the community such as helping with a Brownie pack, playing for a local football team or helping with a village litter pick.

Health and wellbeing are an important part of sixth form life. As well as weekly health and wellbeing sessions where you can make use of the sports facilities, we also have Friday evening staff and sixth form football and netball where you can enjoy getting to know your teachers in a more informal and fun way.

East Leake Academy sixth formers are proud that this is their sixth form, and they want you to join them on that journey.



# VISION, VALUES AND ETHOS



**ALWAYS  
ENCOURAGED  
TO SUCCEED**

**Our vision**

---

To inspire.  
To raise aspirations.  
To create brighter tomorrows.

**Our values**

---

We empower  
We respect  
We care

# Our ethos



OUR SIXTH FORM IS A **VIBRANT** AND **DYNAMIC** PLACE TO STUDY WITH AN ARRAY OF OPPORTUNITIES FOR STUDENTS TO DEVELOP AND **PREPARE FOR THE FUTURE**



**HEALTH AND WELLBEING** AT OUR CORE

Warm, friendly and supportive environment

OUR RESULTS ARE **IMPRESSIVE** AND OUR FOCUS IS **ACADEMIC**



**PASSIONATE AND DEDICATED TEACHERS AND TUTORS**



High expectations at all times



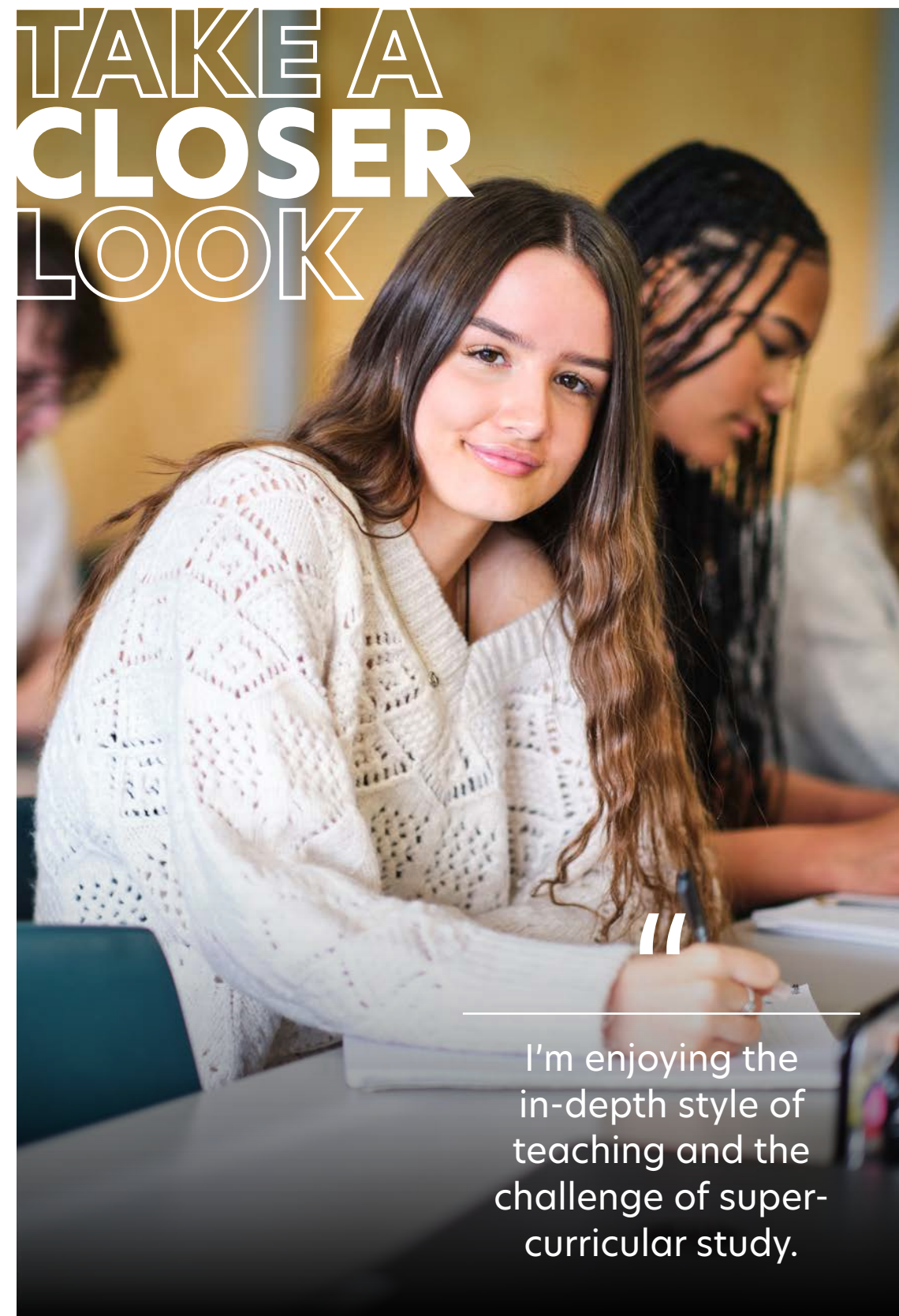
**EXTRA-CURRICULAR EXPERIENCES**

CHALLENGED TO EXCEL



STUDY  
WITH US

TAKE A  
CLOSER  
LOOK



“

I'm enjoying the  
in-depth style of  
teaching and the  
challenge of super-  
curricular study.

# KEY FACTS

APPRENTICESHIP  
APPLICATION  
SUPPORT

Students regularly  
gain places at  
**Oxbridge** and  
**Russell Group**  
universities

Vulnerable  
bursary of up to  
**£1,200**  
per year for  
young people

**SUPPORT WITH  
OVERSEAS,  
MEDICAL AND  
VETERINARY  
APPLICATIONS**

**EPQ**

**28** **A LEVEL AND BTEC  
LEVEL 3 COURSES  
ON OFFER**

**1WEEK** WORK  
PLACEMENT

**18%**  
A\* - A GRADES

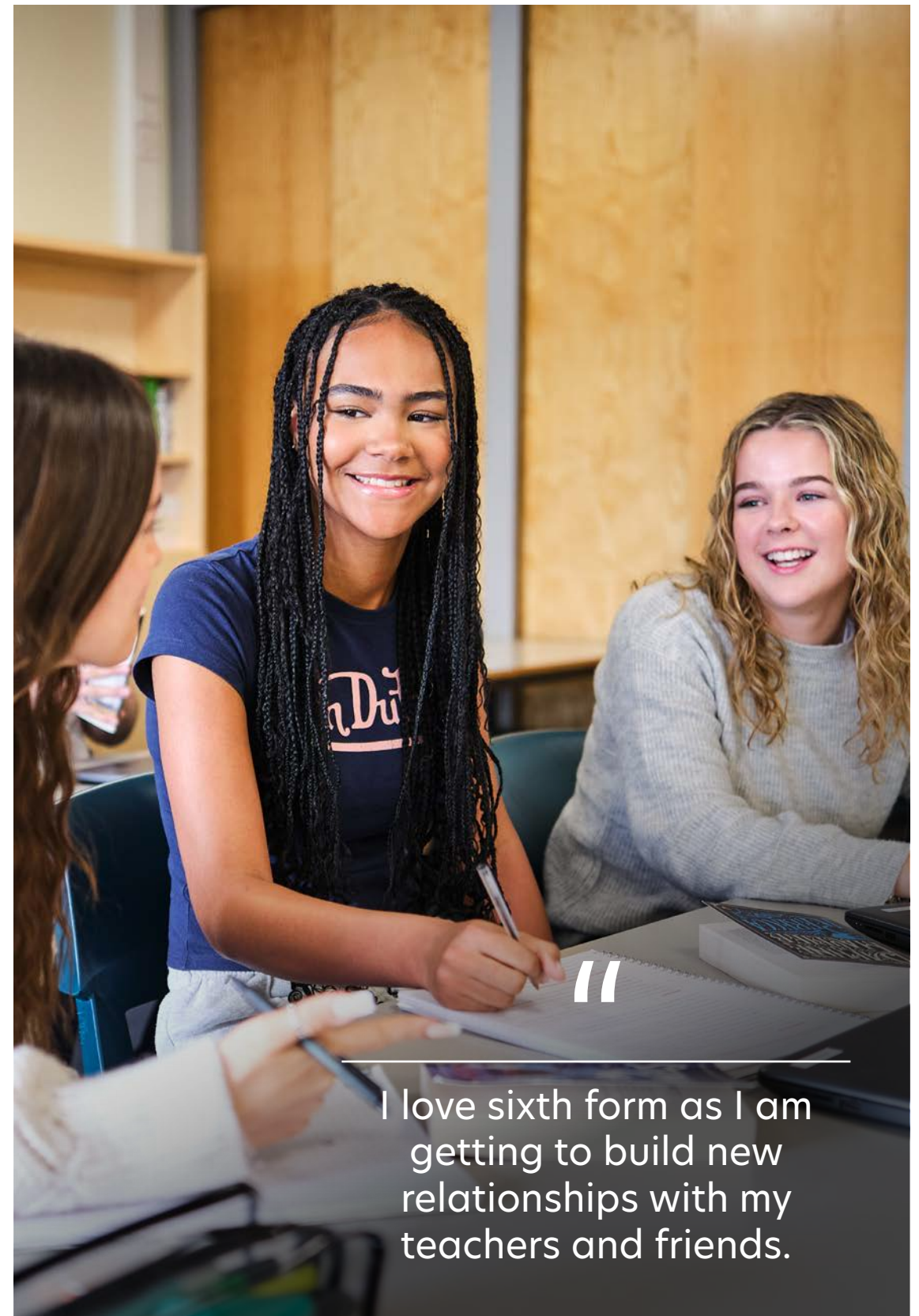
**48%**  
A\* - B GRADES

**70%**  
A\* - C GRADES

# TOP 10 REASONS TO STUDY AT **ELA** SIXTH FORM

1. Smaller class sizes with individual attention ✓
2. You will be part of our community and family. RELATIONSHIPS at the heart of all we do ✓
3. High **ACADEMIC ACHIEVEMENT** and **RESULTS** ✓
4. **STRONG ENRICHMENT PROGRAMME** ✓
5. Subject-specialist teachers ✓
6. One-to-one UCAS and post 18 destinations support ✓
7. **INDIVIDUAL PASTORAL AND ACADEMIC SUPPORT** ✓
8. Express yourself with non-uniform ✓
9. Leadership and community outreach opportunities ✓
10. Strong student-staff working relationships ✓

# STUDENT LIFE



“

I love sixth form as I am getting to build new relationships with my teachers and friends.



# 6 FOR SIXTH FORM

We are committed to supporting students' academic progress, personal development and enrichment. The ELA '6 for sixth form' is a series of commitments that students undertake during their time in the sixth form.

Each pledge is designed to prepare and equip students for life in modern Britain by developing a range of skills in line with our academy values of **we empower**, **we respect**, **we care**.

## WE EMPOWER

- 1 Take part in a residential or day trip. For example, visit UK Parliament
- 2 Complete a massive online open course (MOOC)\*

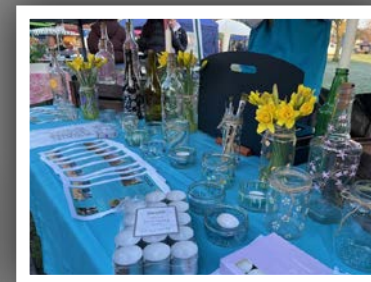
## WE RESPECT

- 3 Participate in a team building event
- 4 Contribute to a whole school or sixth form event

## WE CARE

- 5 Lead a community-based project
- 6 Run a club or activity for key stage 3 students

Life in our sixth form allows students more independence and freedom, including an array of enrichment opportunities to support learning and the development of life skills.



## READING AND MENTORING YOUNGER STUDENTS

Charity and community events

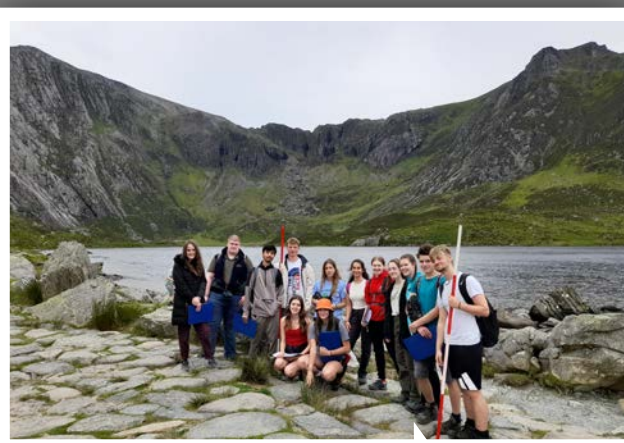
Young Enterprise programme



STUDENT COMMITTEE

“

I love sixth form - ELA gives everyone support to develop their independence.



\* A series of university style lectures giving students a taster of the subject at HE level

Trips and visits programme

## PREPARING FOR ADULT LIFE

- First aid
- Cooking on a budget
- Managing finances
- Becoming a new driver



# ENRICHMENT



“

---

The smaller class sizes are great because they are quieter and you have more one to one support when you need help.



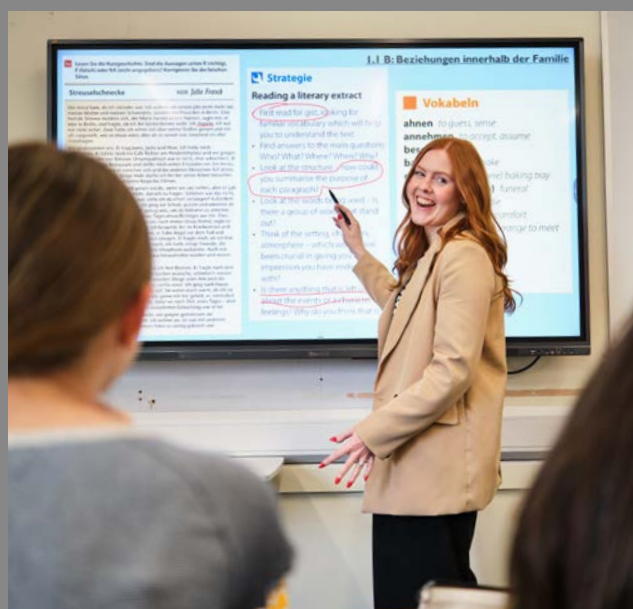
Whether you're interested in dance, drama, music, sports, the environment or you have a passion for leading and organising charitable and community events – we offer plenty of opportunities that take academic study to a higher level.

There are many super-curricular possibilities at sixth form which make for a rewarding and enjoyable experience. These include:

- First aid training
- University visits
- Higher education workshops
- Apprenticeship workshops
- Careers presentations e.g. Armed Forces, NHS, Crown Prosecution Service
- Enterprise day
- Voluntary service opportunities
- Employability skills workshops
- Preparation for adult life e.g. cooking on a budget, personal finance, organ donation
- Making the most of a gap year
- Artificial intelligence in the workplace

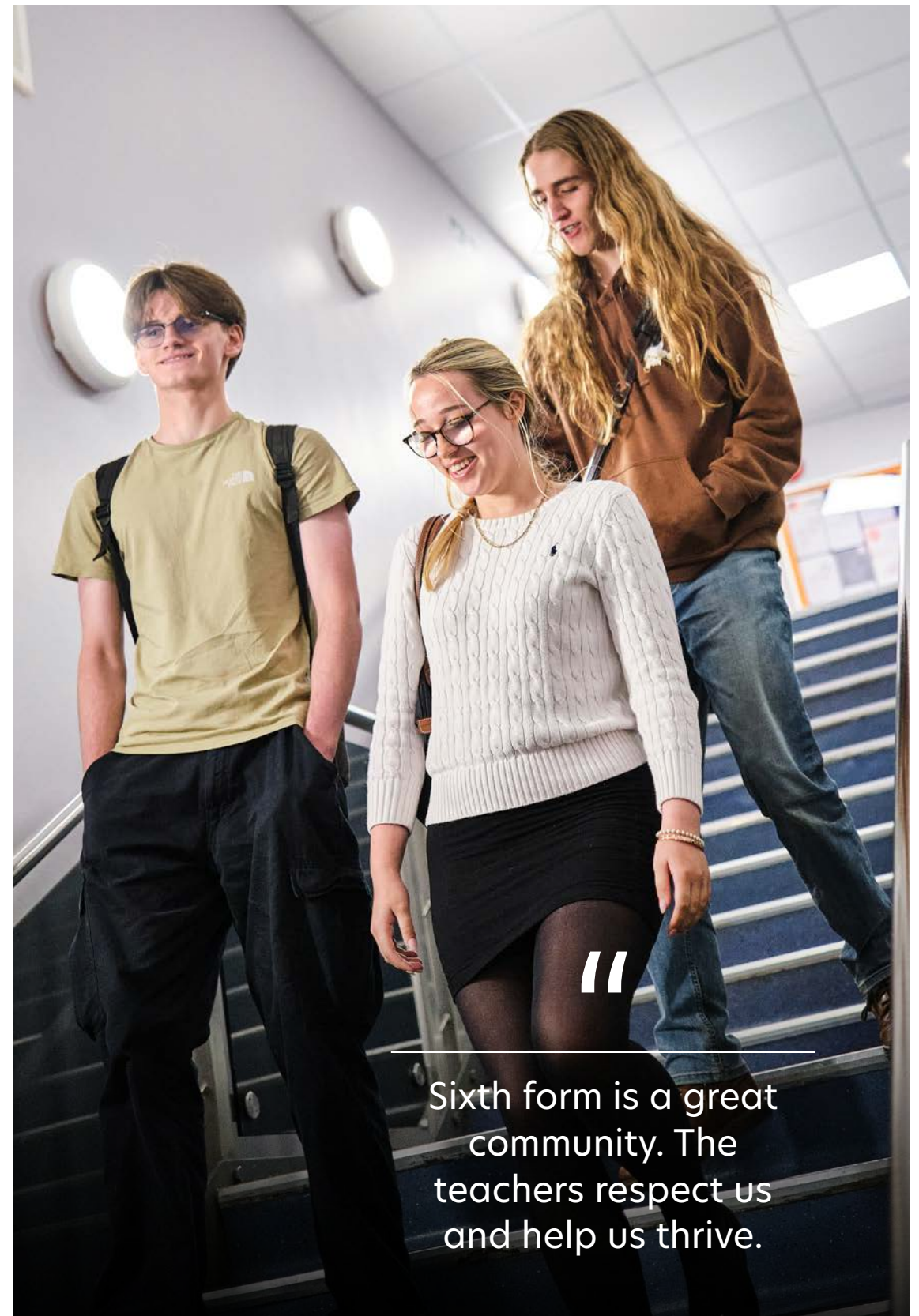


Within the academy, we have fully equipped science laboratories, design and technology rooms, art rooms, food science facilities and IT suites. Green outdoor spaces provide the perfect backdrop for sports, complemented by two indoor sports halls, a fitness suite and an adjoining community leisure centre with swimming pool.





# YOUR ONWARD JOURNEY



“

Sixth form is a great  
community. The  
teachers respect us  
and help us thrive.

# Future pathways

SUPPORTING YOU **EVERY STEP OF THE WAY** AS YOU PLAN YOUR FUTURE PATHWAYS

**UCAS**

and university destinations support

**Access to Unifrog**

**Personalised** careers advice

**DEDICATED** Oxbridge advisors

**Preparing** for apprenticeships

## Non-UCAS destinations include:

- Toyota
- Probation service
- Police service
- Army
- Finance apprenticeship
- IT apprenticeship
- Logistics apprenticeship (DHL)

**UCAS**  
www.ucas.com

**unifrog**



**NGTU**  
NOT GOING TO UNI  
www.notgoingtouni.co.uk

★ **RATEMYAPPRENTICESHIP**  
ratemyapprenticeship.co.uk

# Higher education destinations

Just some of the leading Russell Group and top universities our former students have gone on to





# YOUR STUDY OPTIONS



“

One of the best things  
about sixth form is  
getting independent  
study time.

# Giving you a head start



## Gold Arts Award

Some students will be given the opportunity to undertake Gold Arts Award, with support provided by trained and dedicated staff. This qualification requires students to engage in developing a new artistic skill and can result in 16 UCAS points to further bolster applications. Students must research and actively engage within the artform they choose to develop and should showcase their developed skills at the end of the project.

Artforms are not limited and can include anything students wish to develop. This may include:

- Painting
- Pottery
- Photography
- Music
- Poetry
- Animation
- Fashion design

View our courses online  
[www.eastleake-ac.org.uk/  
sixth-form/courses](http://www.eastleake-ac.org.uk/sixth-form/courses)



## Art

### A level

Whether you aspire to be a professional artist or designer, or you simply enjoy being creative, this course will enable you to develop the skills to interpret and convey your ideas and feelings using visual imagery. It will develop your imaginative and creative powers alongside your experimental, analytical and documenting skills. Your knowledge and understanding of artistic styles will inspire and inform the progression of your own work. You will be given opportunities to explore a diverse range of materials and techniques such as painting, drawing, sculpture, mixed media, printmaking, textiles, photography, digital work, animation and video installation.

### Entry requirements

Grade 6 GCSE in art. Five grade 5s at GCSE including English and maths

### Examination board:

AQA

### Find out more at:

[www.eastleake-ac.org.uk/  
sixth-form/courses/art](http://www.eastleake-ac.org.uk/sixth-form/courses/art)

## Biology

### A level

Biology is the scientific study of life itself. It involves knowledge of the wide range of living things and an understanding of the life processes that they all share in common. These processes, collectively termed metabolism, enable species to survive in their environment, to reproduce and to evolve.

This course is aimed at students who want to know more about how the living organisms function both within themselves and within the environment in which they live.

### Entry requirements

Grade 7 (double) or grade 6 (triple) in GCSE biology, grade 6 GCSE maths. Five grade 5s at GCSE including English

### Examination board:

OCR

### Find out more at:

[www.eastleake-ac.org.uk/  
sixth-form/courses/biology](http://www.eastleake-ac.org.uk/sixth-form/courses/biology)

## Business

### A level

Whether you hope to one day be a chief executive of a multinational company or you are simply looking for an A level that will give you a great understanding of how the world works, business is a great option. The course has had considerable exam success and our students have progressed onto a wide range of higher education courses. You will learn all about the inner workings of the businesses you see around you every day, from your corner shop to global brands such as Nike. You will also learn how businesses plan for the future, how they stay ahead of the competition, how they manage their resources, and how they strategically operate in domestic and global markets.

### Entry requirements

Grade 6 GCSE business. If business not taken at GCSE – grade 6 GCSE maths, (A level core maths recommended). Five grade 5s at GCSE including English

### Examination board:

AQA

### Find out more at:

[www.eastleake-ac.org.uk/  
sixth-form/courses/business](http://www.eastleake-ac.org.uk/sixth-form/courses/business)





## Chemistry

### A level

Chemistry is an essential A level for students wishing to pursue a career in medicine. Many students progress to university and become doctors, pharmacists, dentists and forensic scientists. Chemistry is an exciting STEM subject that can lead to many career possibilities. During the course, you will take part in a wide range of extracurricular activities throughout the two years such as the Chemistry Cambridge Challenge, Chemistry Olympiad, and the chance to be a chemistry ambassador to support students in lower years. You will have the opportunity to attend trips to see the application of chemistry in the wider world.

### Entry requirements

Grade 7 (double) or grade 6 (triple) in GCSE chemistry, grade 7 GCSE maths. Five grade 5s at GCSE including English

### Examination board:

OCR

### Find out more at:

[www.eastleake-ac.org.uk/  
 sixth-form/courses/chemistry](http://www.eastleake-ac.org.uk/sixth-form/courses/chemistry)

## Computer science

### A level

The computer science qualification splits learning into three sections – computer fundamentals, programming techniques and logical methods, and a programming project. A natural progression from GCSE computer science, it provides you with the perfect springboard for looking at specialising in a computing-based career. Within the course, students study a range of theory topics, which include the principles and understanding linked to programming, topics such as hardware and software, networks, systems development life cycles and implications of computer use.

### Entry requirements

Grade 6 GCSE computing. Five grade 5s at GCSE including English and maths

### Examination board:

OCR

### Find out more at:

[www.eastleake-ac.org.uk/  
 sixth-form/courses/computer-science](http://www.eastleake-ac.org.uk/sixth-form/courses/computer-science)

## Core maths

### A level

This qualification is designed to consolidate and build on your mathematical understanding at GCSE, as well as develop your mathematical understanding and skills further in the application of maths to authentic problems. You will gain a deeper competence in the selection and use of mathematical techniques used at GCSE and beyond, develop confidence in representing and analysing authentic situations mathematically and applying maths address related questions and issues. You will also build skills in mathematical thinking, reasoning and communication.

### Entry requirements

Five grade 5s at GCSE including English and maths

### Examination board:

AQA

### Find out more at:

[www.eastleake-ac.org.uk/  
 sixth-form/courses/core-maths](http://www.eastleake-ac.org.uk/sixth-form/courses/core-maths)

## Design and technology: product design

### A level

Design and technology product design will enable you to use creativity and imagination when applying iterative design processes to develop and modify designs, and to design and make prototypes that solve real world problems. You will have the opportunity to work collaboratively to develop and refine ideas, responding to feedback from users, peers and expert practitioners as well as gaining an insight into the creative, engineering and/or manufacturing industries. You will also further develop an in-depth knowledge and understanding of tools, materials, components and processes associated with the creation of products that can be tested and evaluated in use.

### Entry requirements

Level 2 merit in engineering or grade 5 GCSE design and technology. Five grade 5s at GCSE including English and maths

### Examination board:

Pearson/Edexcel

### Find out more at:

[www.eastleake-ac.org.uk/  
 sixth-form/courses/design-technology](http://www.eastleake-ac.org.uk/sixth-form/courses/design-technology)

## Drama

### A level

The study of drama and theatre at A level takes a holistic approach to the subject although it is firmly rooted in the practical realisation of performance. You will study drama and theatre through contrasting plays and workshops, theatre text in performance, dramatic performance and theatre text in context.

### Entry requirements

Grade 6 GCSE drama. Five grade 5s at GCSE including English and maths

### Examination board:

OCR

### Find out more at:

[www.eastleake-ac.org.uk/  
 sixth-form/courses/drama](http://www.eastleake-ac.org.uk/sixth-form/courses/drama)

## Extended project qualification (EPQ)

### Level 3

At East Leake Academy, students can opt to undertake an EPQ qualification at post 16 level, alongside their A level options. This is a highly recognised and valuable qualification to support university applications.

It consists of an independent research project on a topic chosen by the student. The student must produce a 5,000-word essay or create a 'product' plus a 1,000-word essay.

Students work independently on their project but will be guided and supported by teachers.

Students should be working at grade C in year 12 to undertake an EPQ

### Examination board:

AQA

### Find out more at:

[www.eastleake-ac.org.uk/  
 sixth-form/courses/epq](http://www.eastleake-ac.org.uk/sixth-form/courses/epq)



## Economics

A level

A level economics will give you an excellent understanding of how economies allocate their scarce resources to meet the needs and wants of their citizens. You will develop a greater understanding of the economic problems which face individuals, firms and governments on a local, national and global level, and the alternative ways these problems can be resolved.

### Entry requirements

Grade 6 GCSE maths, (A level maths recommended). Five grade 5s at GCSE including English

### Examination board:

AQA

### Find out more at:

[www.eastleake-ac.org.uk/sixth-form/courses/economics](http://www.eastleake-ac.org.uk/sixth-form/courses/economics)

## English language

A level

If you have a genuine interest in language development and analysis, English language is the course for you. The course will involve the exploration and analysis of various forms of spoken, written and 'electronic' English ranging from spontaneous, colloquial conversations, text messages and voice-overs to written texts produced for a specific audience and purpose.

You will analyse and evaluate how language varieties have influenced the construction of a text. You will also produce original writing for a real-world purpose on a topical language issue and undertake a language investigation.

### Entry requirements

Grade 6 GCSE English language. Five grade 5s at GCSE including maths

### Examination board:

AQA

### Find out more at:

[www.eastleake-ac.org.uk/sixth-form/courses/english-language](http://www.eastleake-ac.org.uk/sixth-form/courses/english-language)

## English literature

A level

If you love reading and want to explore texts from a variety of time periods and genres, then this is the course for you. Students will be able to enjoy analysing poetry, drama and prose from a variety of critical viewpoints, debating and challenging different interpretations.

You will have the opportunity to examine texts of your choice as well as developing critical responses to a wide variety of tragic and social/political literature. Opportunities to attend theatrical performances are also an integral part of the literature experience.

### Entry requirements

Grade 6 in English literature, grade 5 in GCSE English language. Five grade 5s at GCSE including maths

### Examination board:

AQA

### Find out more at:

[www.eastleake-ac.org.uk/sixth-form/courses/english-literature](http://www.eastleake-ac.org.uk/sixth-form/courses/english-literature)

## Film studies

A level

Why should you study film? Film is the major mass art form of the 21<sup>st</sup> century and the future looks set to see it grow. Film is an integral part of our culture. It is not only fascinating to look at how films are constructed and how they affect us, but also to ask what they tell us about our society, our understanding of the world around us, and how this differs from nation to nation and culture to culture.

You will be studying cinema in all its diversity from animation to classics, from horror to comedy. We will look at how film is produced, how it communicates meaning, and how it impacts us as individuals and as a society.

### Entry requirements

Grade 6 GCSE English. Five grade 5s at GCSE including maths

### Examination board:

AQA

### Find out more at:

[www.eastleake-ac.org.uk/sixth-form/courses/film-studies](http://www.eastleake-ac.org.uk/sixth-form/courses/film-studies)

## Food science and nutrition

Level 3 Applied Diploma

We offer the WJEC Level 3 Applied Diploma in this subject. An understanding of food science and nutrition is relevant to many industries and job roles. Many employment opportunities within the field of food science and nutrition are available to graduates. This is an applied general qualification. This means it is designed primarily to support learners progressing to university.

It has been designed to offer exciting, interesting experiences that focus learning for 16-19 year old learners through applied learning, i.e. through the acquisition of knowledge and understanding in purposeful, work-related contexts, linked to the food production industry.

### Entry requirements

Merit in Level 2 hospitality and catering. Five grade 5s at GCSE including English and maths

### Examination board:

WJEC

### Find out more at:

[www.eastleake-ac.org.uk/sixth-form/courses/food-science](http://www.eastleake-ac.org.uk/sixth-form/courses/food-science)

## French

A level

Do you enjoy unravelling the French language? Are you interested in the life and culture of French speaking countries? If so, a French A level will help you to embed a range of transferable skills including communication, research skills and creativity, which will be a valuable tool in your working life.

The content of the course can offer a key to success if you are looking for a career with international connections, or as an add-on to a bundle of subjects at A level or university standard.

### Entry requirements

Grade 7 GCSE French. Five grade 5s at GCSE including English and maths

### Examination board:

AQA

### Find out more at:

[www.eastleake-ac.org.uk/sixth-form/courses/french](http://www.eastleake-ac.org.uk/sixth-form/courses/french)





## Further maths

### A level

Further maths is designed for you if you have an enthusiasm for maths, and want to go on to degrees in maths, engineering, the sciences and economics. The qualification is deeper and broader than A level maths. As well as building on algebra and calculus introduced in A level maths, the core content introduces complex numbers and matrices, fundamental ideas with wide applications in engineering, physical sciences and computing.

The non-core contents include different options that can enable students to specialise in areas of maths that are particularly relevant to their interests and future aspirations.

### Entry requirements

Grade 8 GCSE maths. Five grade 5s at GCSE including English

### Examination board:

AQA

### Find out more at:

[www.eastleake-ac.org.uk/sixth-form/courses/further-maths](http://www.eastleake-ac.org.uk/sixth-form/courses/further-maths)

## Geography

### A level

Geography stimulates an interest in and a sense of wonder about places. It helps you make sense of a complex and dynamically changing world. It explains where places are, how places and landscapes are formed, how people and their environment interact, and how a diverse range of economies, societies and environments are interconnected. It builds on students' own experiences to investigate places at all scales, from the personal to the global. By studying geography you will develop a greater understanding of the world around you including the many conflicts and challenges that we as a society will face in the future. You will become problem solvers, forward thinkers and the leaders of tomorrow.

### Entry requirements

Grade 6 GCSE geography. Five grade 5s at GCSE including English and maths

### Examination board:

AQA

### Find out more at:

[www.eastleake-ac.org.uk/sixth-form/courses/geography](http://www.eastleake-ac.org.uk/sixth-form/courses/geography)

## German

### A level

Whatever plans you have for the future, a knowledge of German will increase your career options. For example, knowing the language of your German business partner improves relations and therefore fosters effective communication and global success. Did you know that German is the second most commonly used scientific language? Many important websites are in German and Germany is also ranked within the top ten countries globally in terms of annual publication of new books. Knowledge of German therefore offers you extensive international connections for a broad spectrum of careers and interests, all of which are reasons why a German A level will give you the skills you will need to contribute to a multinational and multilingual society.

### Entry requirements

Grade 6 GCSE German. Five grade 5s at GCSE including English and maths

### Examination board:

AQA

### Find out more at:

[www.eastleake-ac.org.uk/sixth-form/courses/german](http://www.eastleake-ac.org.uk/sixth-form/courses/german)

## History

### A level

History enables you to develop key skills such as analysis and evaluation of historical sources, an awareness of different interpretations, presentation skills and essay writing skills in which you can effectively deliver a supported argument.

History allows you the opportunity to access a broad range of degree subjects and careers, and employers regard it as a strong academic subject.

### Entry requirements

Grade 6 GCSE history. Five grade 5s at GCSE including English and maths

### Examination board:

AQA

### Find out more at:

[www.eastleake-ac.org.uk/sixth-form/courses/history](http://www.eastleake-ac.org.uk/sixth-form/courses/history)

## Maths

### A level

A level maths provides a framework to continue study after GCSE and supports your mathematical needs across a broad range of other subjects at this level. It also supports the study of A level further maths. The course introduces calculus and its applications. It emphasises how maths ideas are interconnected and how maths can be applied to model situations mathematically using algebra and other representations, to help make sense of data, to understand the physical world, and to solve problems in a variety of contexts, including social sciences and business.

### Entry requirements

Grade 7 GCSE maths. Five grade 5s at GCSE including English

### Examination board:

AQA

### Find out more at:

[www.eastleake-ac.org.uk/sixth-form/courses/maths](http://www.eastleake-ac.org.uk/sixth-form/courses/maths)

## Media studies

### A level

Mass media is one of the most fascinating world-changing phenomena of the last 100 years. Media studies draws on sociology, psychology, art, economics and business studies to provide a valuable insight into the theory and practice of mass communication. This exciting course aims to provide a range of media skills and knowledge relevant to you as both critical consumers and competent producers of media. In addition to extending your own understanding and enjoyment of media texts, it would certainly improve your career prospects as communication in all its forms is becoming more sophisticated and calling for a more educated workforce.

### Entry requirements

Grade 6 GCSE media studies. Five grade 5s at GCSE including English and maths

### Examination board:

WJEC/Eduqas

### Find out more at:

[www.eastleake-ac.org.uk/sixth-form/courses/media-studies](http://www.eastleake-ac.org.uk/sixth-form/courses/media-studies)



## Music

BTEC Level 3 extended certificate

If you love music and you are interested in a music career and want to develop your technical skills in music performance, this is the course for you. You will get plenty of time to learn about the necessary skills to be a successful performing musician along with learning about the jobs available in the music industry.

You will gain experience in recording, live sound, performing, song writing and analysing music. You will also have the opportunity to be involved in various gigs and have the chance to visit recording studios and meet industry professionals who will be able to guide you in your future career.

### Entry requirements

Grade 6 GCSE music. Five grade 5s at GCSE including English and maths

### Examination board:

Edexcel

### Find out more at:

[www.eastleake-ac.org.uk/sixth-form/courses/music](http://www.eastleake-ac.org.uk/sixth-form/courses/music)

## Photography

A level

A level photography will particularly appeal to you if you want to communicate ideas visually, have an interest in the relationship between art and photography, enjoy looking at and discussing photographic work and want to engage with practical project-based photography.

You will be offered a variety of experiences that explore a range of photographic media, techniques and processes. You will explore relevant images and resources relating to a range of photography, art and design, from the past and from recent times.

### Entry requirements

Grade 6 in GCSE photography. Five grade 5s at GCSE including English and maths

### Examination board:

AQA

### Find out more at:

[www.eastleake-ac.org.uk/sixth-form/courses/photography](http://www.eastleake-ac.org.uk/sixth-form/courses/photography)

## Physics

A level

Do you want to investigate the limits of space, the beginning of time and everything in between? You will already have come across some of the concepts of physics at GCSE – forces, energy, waves, radioactivity, electricity and magnetism. At A level you will start to see how these ideas work together, and begin to grasp the universal principles that apply to everything from the smallest atoms to the largest galaxies.

Physics is an ideal subject to lead onto careers in the Armed Forces, engineering, chemistry, mathematics, the airline industry, and accountancy. The fact that physics is a high calibre A level makes students desirable to all areas of industry and commerce.

### Entry requirements

Grade 7 (double) or grade 6 (triple) GCSE physics, grade 7 GCSE maths. Five grade 5s at GCSE including English

### Examination board:

AQA

### Find out more at:

[www.eastleake-ac.org.uk/sixth-form/courses/physics](http://www.eastleake-ac.org.uk/sixth-form/courses/physics)







## Physical education

### A level

Physical education is a two year course where you will be equipped with both a depth and breadth of knowledge, understanding and skills relating to scientific, socio-cultural and practical aspects of physical education. Physical education at A level is recognised as a strong academic qualification which is highly respected by universities, colleges and employers. Subsequently there are now a number of courses at prestigious universities which students can go on to study following A level PE. These include physical education, sports and exercise science, sports and exercise psychology, sport business management, physiotherapy, sports media, sports engineering and sports coaching.

### Entry requirements

Grade 6 GCSE PE. Five grade 5s at GCSE including English and maths

### Examination board:

OCR

### Find out more at:

[www.eastleake-ac.org.uk/sixth-form/courses/physical-education](http://www.eastleake-ac.org.uk/sixth-form/courses/physical-education)

## Politics

### A level

Studying A level politics will develop your understanding of democracy, structures of authority and power, and various political systems within the United Kingdom. The course also builds on the global political scene by studying governance, human rights, power and comparative theories. It allows students to interpret, evaluate and comment on the nature of politics and government.

The course will support you to gain a range of transferrable skills such as analysis, debate and communication.

### Entry requirements

Grade 6 in English language. Five grade 5s at GCSE including maths

### Examination board:

Edexcel

### Find out more at:

[www.eastleake-ac.org.uk/sixth-form/courses/politics](http://www.eastleake-ac.org.uk/sixth-form/courses/politics)

## Psychology

### A level

Psychology is the scientific study of the mind and behaviour. A subject which we can all relate to from our own experiences. The course examines research attempting to address broad issues such as how we can improve our memory, bring about social change and treat phobias. A topic-based approach to the subject is adopted enabling students to develop knowledge and understanding of the core areas in psychology.

The emphasis is on scientific analysis involving interpretation and evaluation of data using statistics. Students will have the opportunity to take part in a variety of classroom experiments gaining first-hand experience of research.

### Entry requirements

Grade 6 GCSE maths. Five grade 5s at GCSE including English

### Examination board:

AQA

### Find out more at:

[www.eastleake-ac.org.uk/sixth-form/courses/psychology](http://www.eastleake-ac.org.uk/sixth-form/courses/psychology)

## Sociology

### A level

This course equips you with the ability to identify and understand the processes, methods and concepts that shape lives, create experiences, solve problems and explore possibilities in the modern world. Because sociology addresses the most challenging issues of our time, it is a rapidly expanding field whose potential is increasingly tapped by those who lead in the fields of politics, law, business and education.

Sociology is an exciting discipline with expanding opportunities for a wide range of careers.

### Entry requirements

Grade 6 in GCSE English language or literature. Five grade 5s at GCSE including maths

### Examination board:

AQA

### Find out more at:

[www.eastleake-ac.org.uk/sixth-form/courses/sociology](http://www.eastleake-ac.org.uk/sixth-form/courses/sociology)

View our courses online  
[www.eastleake-ac.org.uk/sixth-form/courses](http://www.eastleake-ac.org.uk/sixth-form/courses)



# Joining our sixth form

## Entry requirements

If you wish to study A level and Level 3 courses with us, you will need to have achieved the minimum entry requirements in your chosen subjects at GCSE. These can be found for every subject in our A level course listing pages.

As a guide, you should have at least five GCSEs at grade 5 or above (including English and maths), plus grade 6 and above in your chosen subjects.

## Apply online

Apply for your place online by visiting:

[www.eastleake-ac.org.uk/sixth-form/how-to-apply](http://www.eastleake-ac.org.uk/sixth-form/how-to-apply)



## Any questions?

Contact us at any time if you need help or support with your application to our sixth form.

Email: [sixthform@eastleake-ac.org.uk](mailto:sixthform@eastleake-ac.org.uk)  
Phone: 01509 852424



## We are proud to be part of Diverse Academies Trust

Across our primary, secondary and special settings, we share a common mission to nurture curiosity, develop wellbeing and empower children and young people to go beyond their aspirations.

Together, we believe we can make a difference in our diverse communities, and in the lives of those who learn with us and work with us.

For more information, visit [www.diverseacademies.org.uk](http://www.diverseacademies.org.uk)



## **East Leake Academy**

Lantern Lane, East Leake, Loughborough, Leicestershire, LE12 6QN

### **Contact us**

**01509 852424**

**[office@eastleake-ac.org.uk](mailto:office@eastleake-ac.org.uk)**

**[www.eastleake-ac.org.uk](http://www.eastleake-ac.org.uk)**

Diverse Academies Trust (Old Hall Drive, Retford, Nottinghamshire, DN22 7EA; registered company number 07664012) is a not for profit charitable trust with exempt charity status, registered in England and Wales.