



SEND

Special Educational Needs & Disabilities

Support Booklet



How SEND transition used to be

Normally you would be invited into the Academy in the summer term. You would meet the Inclusion Team staff, take a tour of the school and all of the facilities and you would be able to ask lots of questions.

This year is slightly different due to the COVID-19 pandemic and the lockdown situation.

Hopefully this booklet helps to answer some of the questions you might have and ease some of your anxieties about starting Secondary School. The Inclusion Team cannot wait to meet you as soon as it is possible for you to safely visit East Leake Academy!



Mr R Jones is the SEND co-ordinator at East Leake Academy.



ELA Inclusion Department

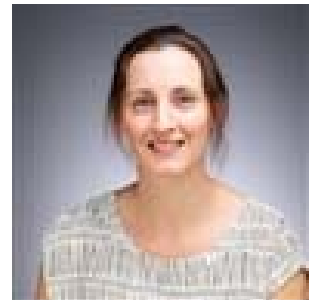
Miss Slater



Miss Elliott



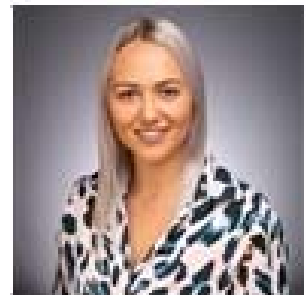
Mrs Clarkstone



Mr Jones



Miss Walters



Mrs James



Meet
THE TEAM

Miss Howard



Mr Bell



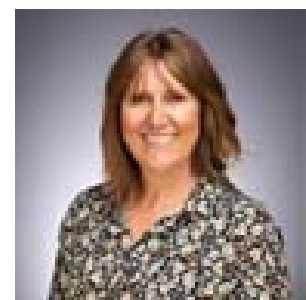
Mrs Holroyd



Mrs Gloag



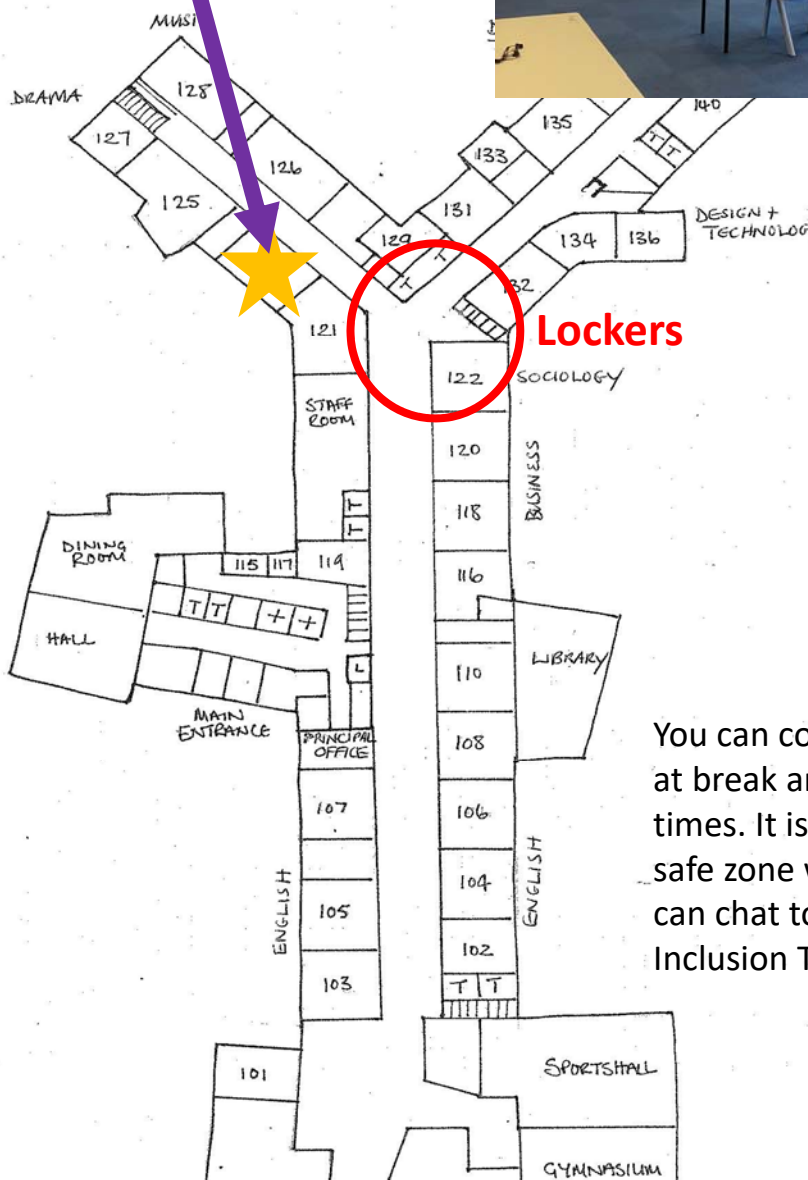
Mrs Hopewell





Where is the Inclusion Team based?

The inclusion team are based on the ground floor in room 123, near to the lockers.



You can come here at break and lunch times. It is a quiet, safe zone where you can chat to the Inclusion Team staff.





What does the Inclusion Team do?

East Leake is an inclusive academy where everyone is made to feel welcome. Our vision sets out to ensure that all students enjoy high quality learning experiences through which they are able to achieve their full potential.

The academy supports students in four main areas:

- ✓ communication and interaction
- ✓ cognition and learning
- ✓ behaviour, emotional and social development
- ✓ sensory and/or physical

Reducing barriers to learning and providing appropriate support so that all students feel able to participate.



The SEN Co-ordinator for East Leake Academy is:

Mr R Jones – rjones@eastleake-ac.org.uk

- We are based in Room 123
- You will always find a friendly face in there to chat to, if you need it.
- We offer somewhere to go at break and lunchtime to eat your lunch and to meet new friends.



How to organise your week

Your timetable can sometimes be tricky to understand and you may need to access it many times in the school day. Keeping it in your blazer pocket will help!

Below is a template of a simplified timetable. We recommend you put the room number of your classes in each box. This means you can quickly have a look and see which room you should be heading for!

	Monday	Tuesday	Wednesday	Thursday	Friday
P1					
P2					
P3					
P4					
P5					
P6					

You can cut this out and either glue it onto some card, or laminate it!

Here is an example one!

You could even colour in the lessons!
For example:

Maths = Red

English = Blue

Science = Yellow

Etc.

	Monday	Tuesday	Wednesday	Thursday	Friday
P1	DT	Eng 105	Miss Slater 129	Maths 222	Miss Slater 129
P2	DT	French 204	PE	French 204	Geog 238
P3	Eth 226	Hist 225	PE	Sci 239	Maths 229
P4	Eng 104	Maths 229	Music 125	Art 140	Drama 127
P5	Sci 231	French 204	Maths 229	English 104	Geog 238
P6	Maths 222	Sci 238	Engl 104	Sci 239	Eng 102

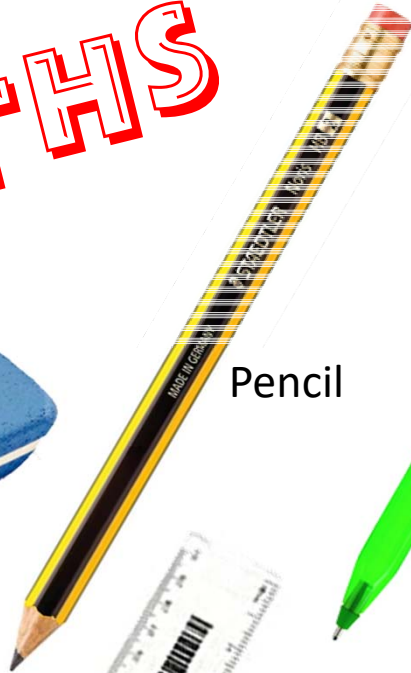
What equipment do you need?

MATHS

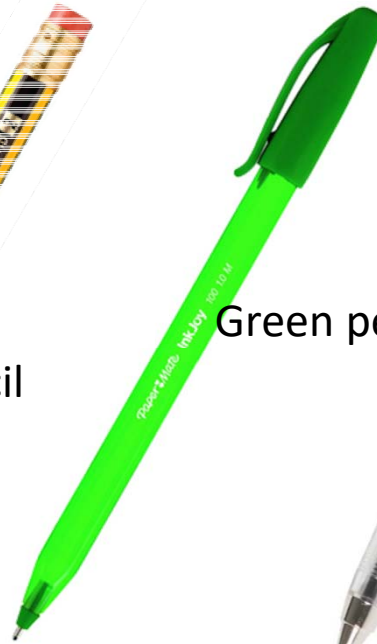
Rubber



Pencil



Green pen



Black/blue pen

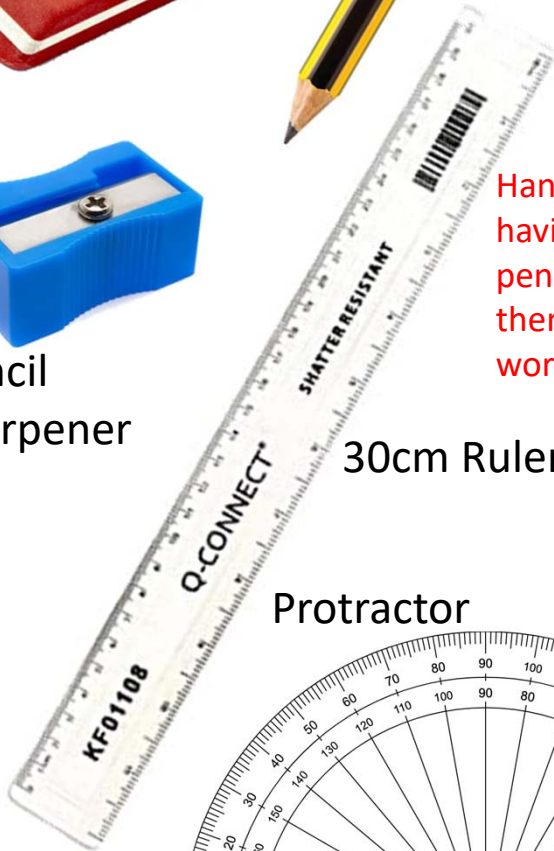


Handy Tip: It's worth having a spare pen and pencil in case you lose them or the pen stops working!

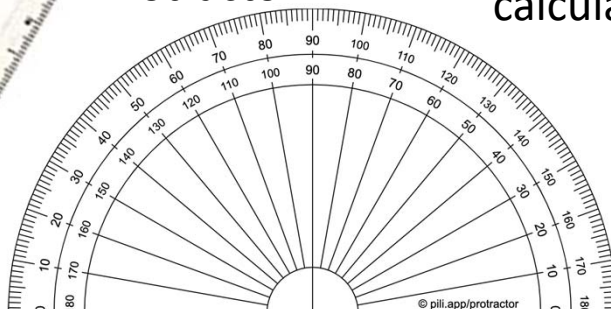
Pencil sharpener



30cm Ruler



Protractor



Scientific calculator



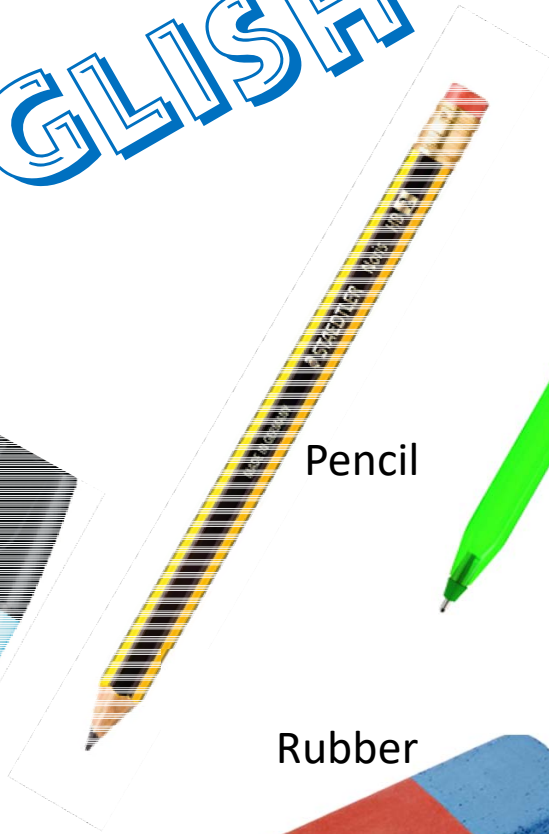
What equipment do you need?

ENGLISH

Highlighter
(optional)



Pencil



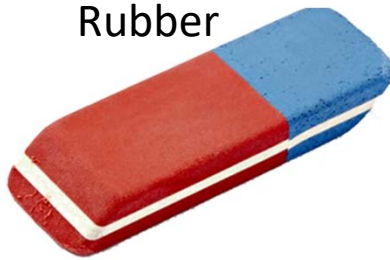
Green pen



Black/blue
pen



Rubber

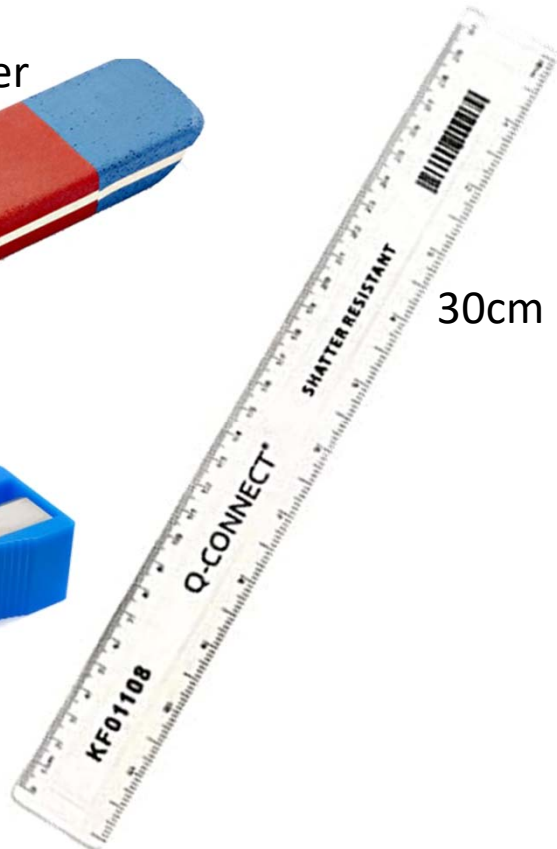


Handy Tip: It might be a good idea to have a highlighter. If you struggle with reading on white paper, this might help! Or it is useful for highlighting new words.

Pencil
sharpener



30cm Ruler

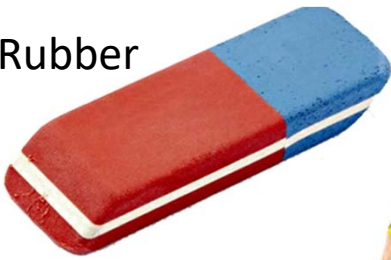


What equipment do you need?

Handy Tip: The equipment you need is the same for science and maths!

SCIENCE

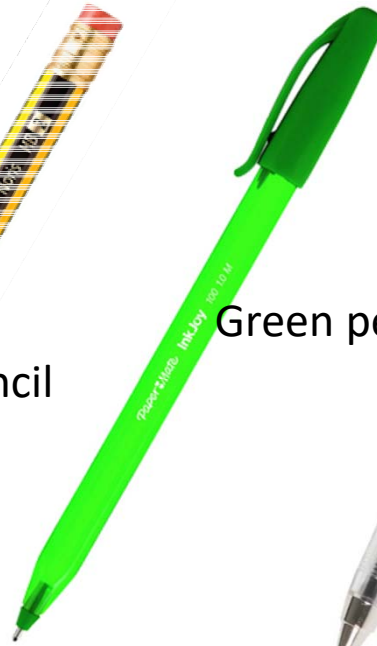
Rubber



Pencil



Green pen



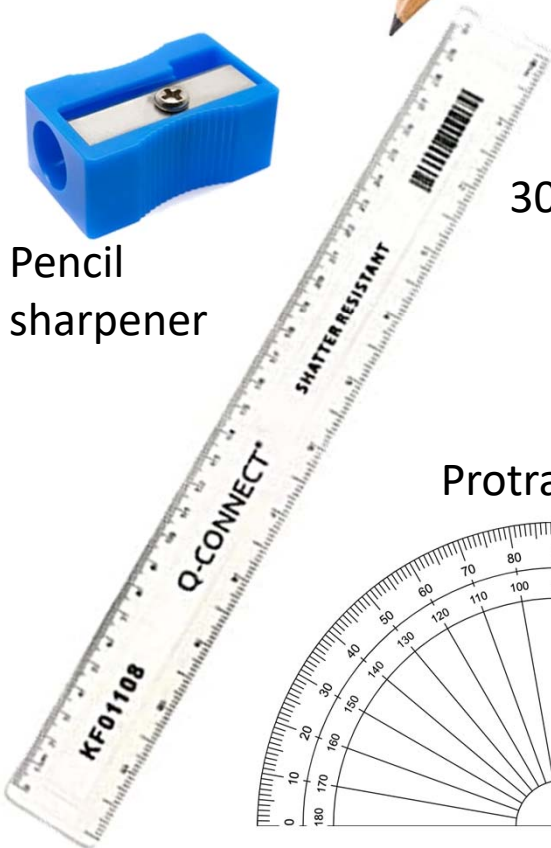
Black/blue pen



Pencil sharpener



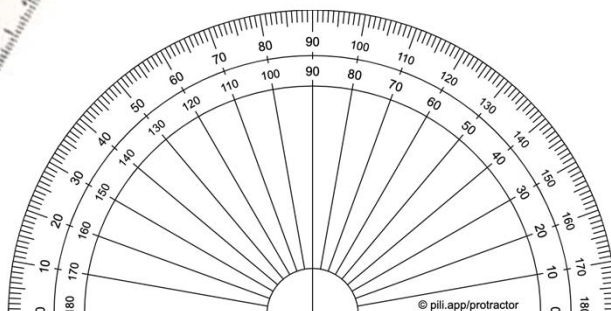
30cm Ruler



Scientific calculator



Protractor





What equipment do you need?

PE

PE top (boys)



PE top (girls)



PE shorts
(boys/optional
for girls)



Skort (girls)



Rugby Jersey
(boys)



¾ Zip jumper
(optional)



White sports
socks (indoor)



Long black
socks
(outdoor
lessons)



Base layer
(optional)



Gum shields
(boys only)



Football boots (optional)



Sports trainers

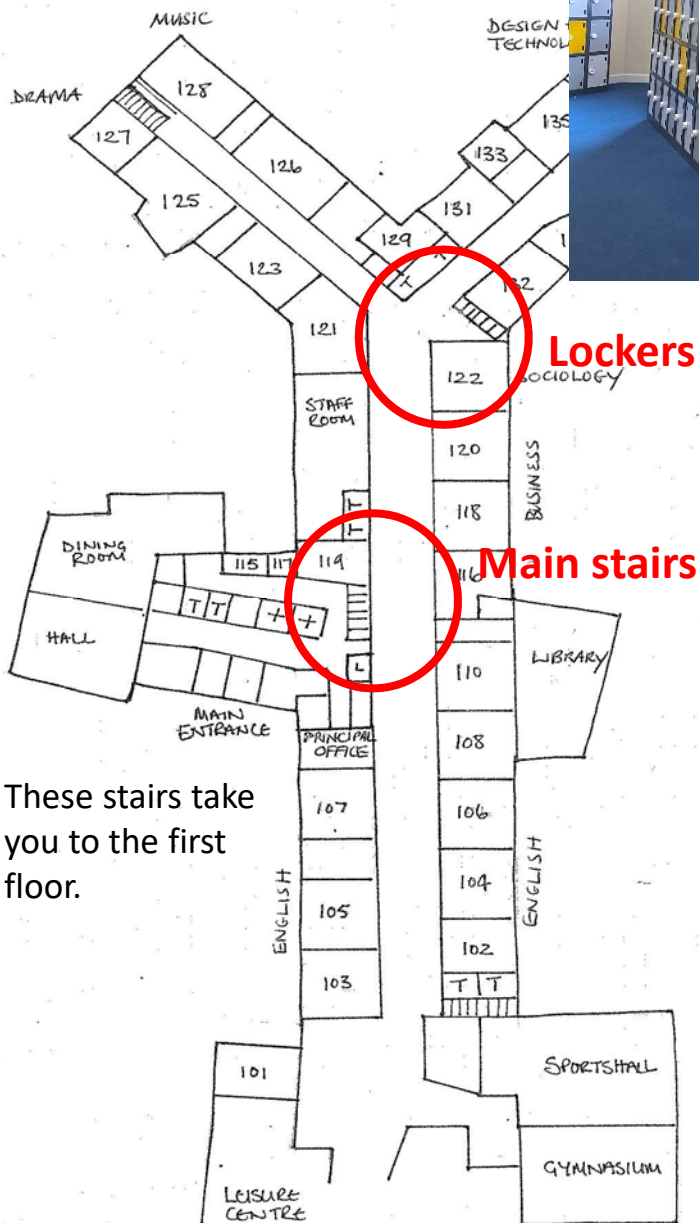
Shin pads



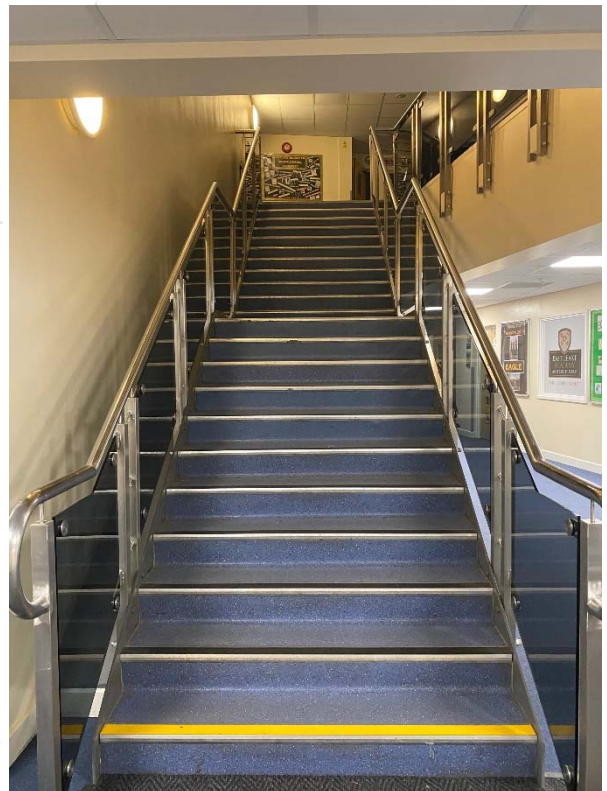


Helpful information

The lockers are very secure and you have a 4-digit code to open them. They are perfect for putting your PE kit in!



These stairs take you to the first floor.

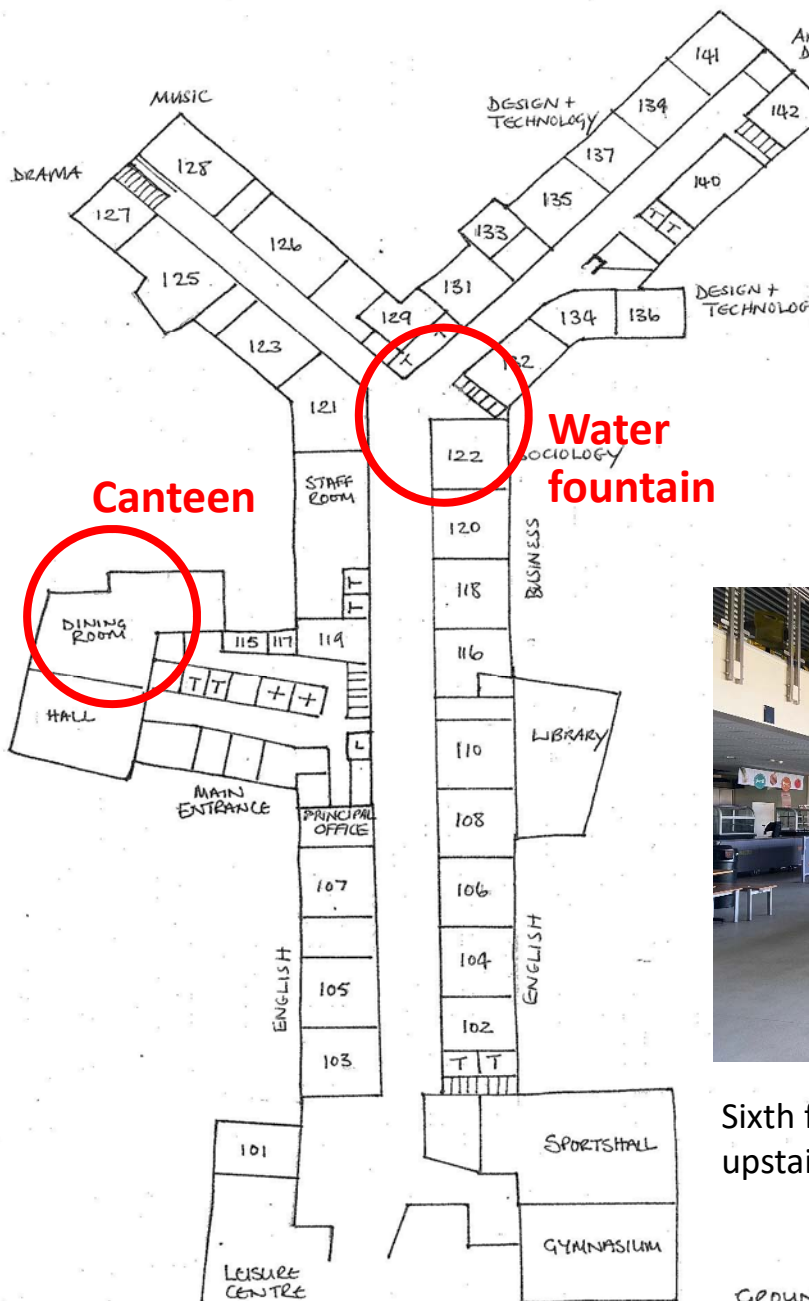


GROUND FLOOR



Helpful information

You can bring a bottle to school and fill it up before or after school, or at break and lunch time.

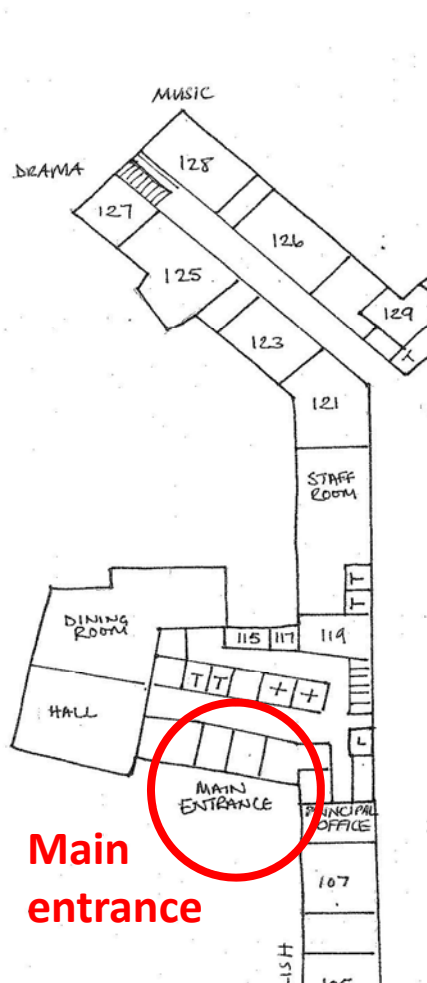


Sixth form students and year 11s can sit upstairs on the balcony!

GROUND FLOOR

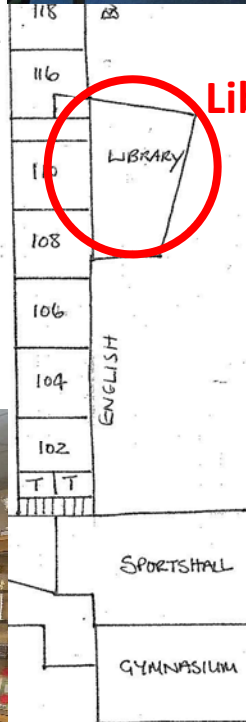


Helpful information



These doors are locked during the school day, only staff can let you in or out of the building.

Main entrance



Library

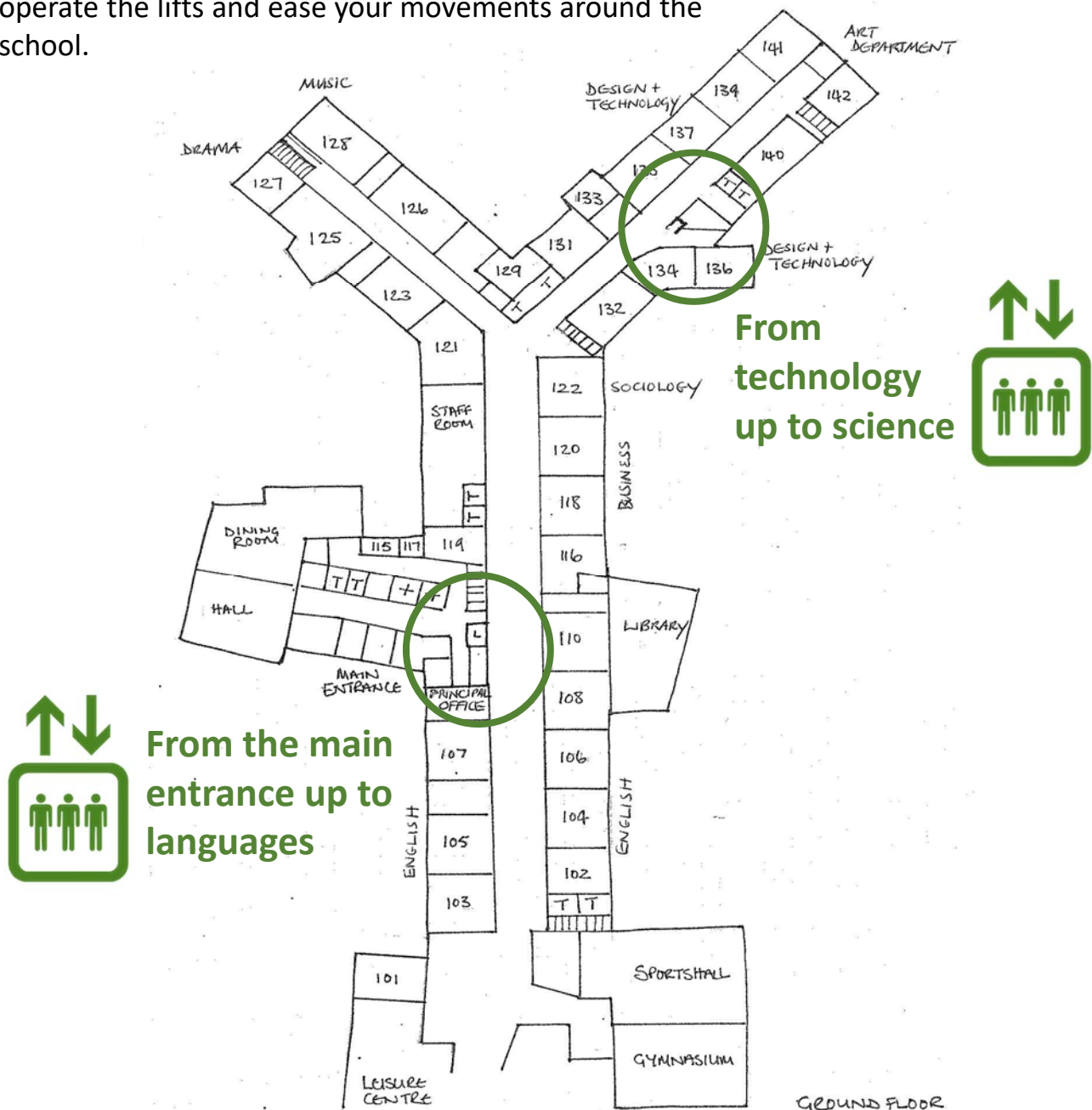
The library is open at break and lunch and is a quiet place. You can read a book, do some homework or use the computers.

GROUND FLOOR



Helpful information

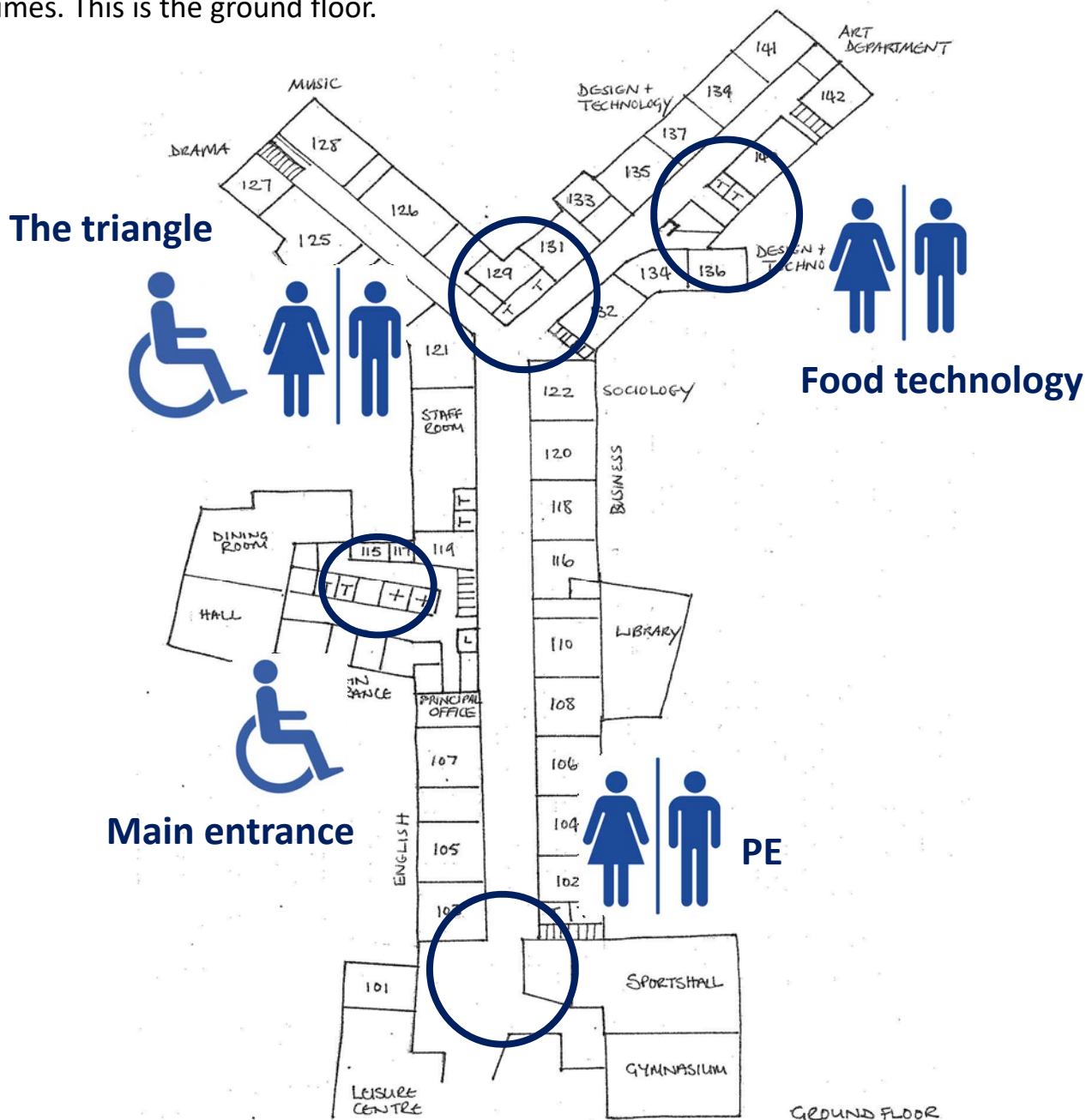
We have 2 lifts at ELA, if you have crutches, a walking frame or a wheelchair. If eligible, you get a key to operate the lifts and ease your movements around the school.





Helpful information

There are toilets on both floors of the building. You can use these before or after school and at break and lunch times. This is the ground floor.





Helpful information

There are toilets on both floors of the building. You can use these before or after school and at break and lunch times. This is the first floor.

