

East Leake Academy SEND Offer

Where **SEND Support** provision is not effective at meeting needs when reviewed over the course of an academic year, an EHCP (Education, Health & Social Care Plan) might be applied for. An EHCP is a statutory document stating the individual needs of a student and an action plan to support provision. This is collated by all professionals working with the student and family. Any student who is code K SEND Support or has an EHC Plan may access one or more of the following:

- Referral to and liaison with the Educational Psychology Service
- Referral to and liaison with the Supporting Families Specialist Services (Cognition & Learning, Communication & Interaction and Sensory teams)
- Referral to and liaison with health professionals (e.g. Paediatrics, PDSS, CAMHS and Occupational Therapy) on matters relating to education in school
- Referral to and liaison with external social care professionals (e.g. Targeted Support, Social Care) on matters relating to education in school
- Special Educational Needs Provision Map and Termly Reviews
- Bespoke Careers advice and guidance from Year 9
- Additional funding to meet identified educational needs in school (Subject to set funding criteria)

SEND Local Offer: Provided by the Local Authority

The Local Offer includes information on what is available for children and young people with special educational needs and disabilities, up to the age of 25. According to post code, parents and students with SEND can access the SEND Local Offer for Nottingham City and Nottinghamshire County, Leicestershire and Derbyshire County Councils. Links for the relevant Local Offer can be found on East Leake Academy website using the *Information* tab to locate *Policies and Statements*

Queries relating to this document can be referred to:

Name	Role	Contact
Mrs K Hardy	Principal	khardy@eastleake-ac.org.uk
Mr R Jones	Head of Enhanced Learning Faculty SENCo Designate	rjones@eastleake-ac.org.uk
Mrs C Mead	Deputy Head of Faculty SEND Responsibility for ARNA (Anxiety Related Non-Attendance)	cmead@eastleake-ac.org.uk

SEND Provision at East Leake Academy *Parental Guidance*



East Leake Academy aims to support all students with **SEND** (*Special Educational Needs and Disabilities*) through provision which offers reasonable adjustments to cater for individual learning needs. This support is further enhanced by the delivery of a range of training opportunities for all staff relating to a variety of SEND. These documents set out our **Graduated Response** to meeting the needs of all students to enable learning, achievement and success

Standard Provision - Wave 1 Quality First Provision across the Academy

The educational and pastoral needs of all students are met within the Academy through provision which is available to all learners as a standard academy offer. All students have access to the following support and resources:

Educational Provision	Year Groups
Quality First Teaching	All Years
Revision Sessions Subject Surgeries	Key Stage 4
MTG Progress Reviews	All Years
Parents Evenings	All Years
Progress Monitoring	All Years
Guest Speakers	All Years
Educational Visits	All Years
Residential Visits	All Years
Homework Clubs	All Years
Motivational Assemblies	All Years
Engagement with Local Offer	All Years
Life Curriculum	All Years
Roots to Success	Key Stage 4

Pastoral Provision	Year Groups
Vertical Tutoring	All Years
Pastoral Leaders	All Years
Pastoral Monitoring	All Years
KS2 Transition Package	Years 6 & 7
KS3 Transition Options Package	Years 9 & 10
Post-16 Transition Package	Years 11, 12 & 13
Peer Mentors	Years 7 and 11
House Assemblies	All Years
Lunch time and after school clubs	All Years
Sports Teams	All Years
Targeted Assemblies	All Years

SEN Review Process:

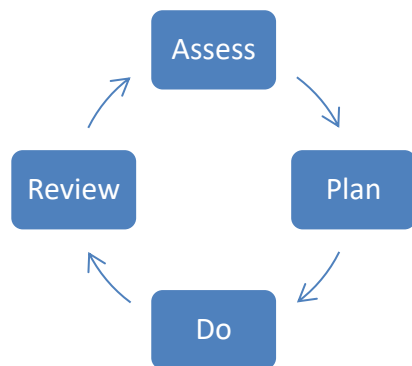
Assess Student needs are identified through assessment against given criteria

Plan A plan for meeting student needs is developed by the member of staff supporting the student with set targets to measure and track progress

Do The plan is carried out for a set period of time

Review The impact of the plan is reviewed against the set targets

If the needs of an individual are met and there is sufficient improvement in learning progress then the review process will be completed



Educational Provision	Year Groups
Individualised timetable The Learning Zone	Key Stage 4
In class or group Enhanced Learning Support	All Years
Individual in class Enhanced Learning Support	All Years
1:1 Personalised Learning Sessions	All Years
Alternative Provision Where appropriate	Key Stage 4
Enhanced Assessment of Educational Needs	All Years

Pastoral Provision	Year Groups
Individual Enhanced Transition Visits	Year 6
School Counselling Service	All Years
Enhanced Learning Break and Lunch Time support	All Years
1:1 Mentorship for ASD and ADHD strategies	All Years
Anxiety Related Non-Attendance support	All Years
Emotional Literacy Support	All Years

If an individual short-term Wave 2 Intervention is ineffective at meeting the needs of a student, Wave 3 support will be offered. At this point, the student could be identified as requiring Special Educational Provision and may then be coded as K SEND Support.

Standard Provision - Wave 2 Short-Term Interventions

Where individual academic, social or emotional needs cannot be met through Wave 1 Standard Provision, specific areas requiring support are identified. Short term Intervention will be offered over a half term period in consultation with parents and carers. Interventions are delivered by qualified and trained members of staff in coordination with Heads of Faculty in the Core subject areas of Maths and English. Students are identified using progress data and class teacher recommendations. Students accessing intervention are not always included on the SEND Register but are monitored using internal tracking systems.

Educational Provision	Year Groups
Small Group Intervention for Literacy	Key Stage 3
Small Group Interventions for Numeracy	Key Stage 3
In class Enhanced Learning support	All Years
Compulsory Revision Groups	Key Stage 4
Homework Hub Enhanced Learning	All Years
Subject Surgeries	Key Stage 4

Pastoral Provision	Year Groups
Breakfast club	All Years
School counselling Service	All Years
Anxiety Related Non-Attendance support	All Years
Enhanced Learning Lunchtime support	All Years
Raising Attendance Workshops	Key Stage 3
Positive Futures 1:1 Mentoring	Key Stage 3

SEND Support – Wave 3 Individual Provision across the Academy

A student is identified as having SEND if they are experiencing barriers to learning which is a barrier to academic, social or emotional progress. Where a student is academically more than 2 years behind expected progress, support which is additional to and different from the standard offer of educational provision will be required to enable progress. Additional provision will result in students being identified as SEND code K on the Academy SEND Code of Practice Register. This provision may also include one or more Wave 2 interventions that are delivered over a sustained timescale. If a student is included on the SEND Register parents and carers will be informed. A student identified as SEND Support will have a keyworker assigned to them and will receive 3 Review Meetings throughout the academic year.

EHCP

Finally, a statutory assessment may be requested by the local authority to consider the young person for an EHC plan. This is carried out by the local authority to assess the needs of the young person and to ensure suitable provision is put in place to meet the educational, health and care needs of the individual. Further information can be access from the appropriate local authority's local offer page.

EHC- Educational Health Care Plan

- Request for an EHC Plan
- EHC Reviews (Students with an EHC Plan only)

